



**SIR THOMAS
BOTELER**

CHURCH OF ENGLAND HIGH SCHOOL
THROUGH GOD, WE CARE

HIGH EXPECTATIONS
HIGH ASPIRATIONS
HIGH STANDARDS
YOU WILL SUCCEED

BOTELER.ORG.UK



THE
CHALLENGE
ACADEMY
TRUST

EXAM PREPARATION AND STUDY SKILLS

THURSDAY 10TH OCTOBER

MR. MASON
ASSOCIATE ASSISTANT HEADTEACHER





**SIR THOMAS
BOTELER**
CHURCH OF ENGLAND HIGH SCHOOL
THROUGH GOD, WE CARE

HIGH EXPECTATIONS
HIGH ASPIRATIONS
HIGH STANDARDS
YOU WILL SUCCEED

BOTELER.ORG.UK

AGENDA

- General Overview – Mr. Mason
- Science – Mr. Davies
- English – Mr. Vallender
- Mathematics – Mr. Allen
- Key Revision Strategies – Mr. Mason



**SIR THOMAS
BOTELER**

CHURCH OF ENGLAND HIGH SCHOOL
THROUGH GOD, WE CARE

HIGH EXPECTATIONS
HIGH ASPIRATIONS
HIGH STANDARDS
YOU WILL SUCCEED

BOTELER.ORG.UK

WHY?



**SIR THOMAS
BOTELER**

CHURCH OF ENGLAND HIGH SCHOOL
THROUGH GOD, WE CARE

HIGH EXPECTATIONS
HIGH ASPIRATIONS
HIGH STANDARDS
YOU WILL SUCCEED

BOTELER.ORG.UK



Arbor



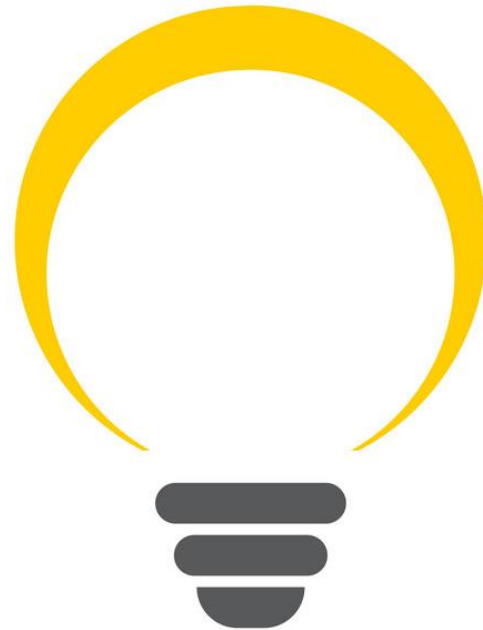
**SIR THOMAS
BOTELER**

CHURCH OF ENGLAND HIGH SCHOOL
THROUGH GOD, WE CARE

HIGH EXPECTATIONS
HIGH ASPIRATIONS
HIGH STANDARDS
YOU WILL SUCCEED

BOTELER.ORG.UK

ATTENDANCE





**SIR THOMAS
BOTELER**

CHURCH OF ENGLAND HIGH SCHOOL
THROUGH GOD, WE CARE

HIGH EXPECTATIONS
HIGH ASPIRATIONS
HIGH STANDARDS
YOU WILL SUCCEED

BOTELER.ORG.UK

APPROX HOURS OF LESSONS MISSED BY END OF EACH HALF-TERM

ATTENDANCE	HALF-TERM 1	HALF-TERM 2	HALF-TERM 3	HALF-TERM 4	HALF-TERM 5	HALF-TERM 6
95%	9 hrs	17 hrs	26 hrs	32 hrs	39 hrs	47 hrs
90%	17 hrs	35 hrs	52 hrs	64 hrs	78 hrs	95 hrs
85%	26 hrs	52 hrs	77 hrs	96 hrs	117 hrs	142 hrs
80%	34 hrs	69 hrs	103 hrs	128 hrs	156 hrs	189 hrs
75%	43 hrs	86 hrs	129 hrs	160 hrs	195 hrs	236 hrs
70%	51 hrs	104 hrs	155 hrs	192 hrs	234 hrs	284 hrs
65%	60 hrs	121 hrs	180 hrs	224 hrs	273 hrs	331 hrs
60%	68 hrs	138 hrs	206 hrs	256 hrs	312 hrs	378 hrs



**SIR THOMAS
BOTELER**

CHURCH OF ENGLAND HIGH SCHOOL
THROUGH GOD, WE CARE

HIGH EXPECTATIONS
HIGH ASPIRATIONS
HIGH STANDARDS
YOU WILL SUCCEED

BOTELER.ORG.UK

POSITIVE CORRELATION

Attendance – Attainment



**SIR THOMAS
BOTELER**

CHURCH OF ENGLAND HIGH SCHOOL
THROUGH GOD, WE CARE

HIGH EXPECTATIONS
HIGH ASPIRATIONS
HIGH STANDARDS
YOU WILL SUCCEED

BOTELER.ORG.UK

**THE STUDENTS WHO ACHIEVED A POSITIVE PROGRESS
SCORE (P8) AVERAGED 94.5% ATTENDANCE VERSUS 89.2%
FOR THE GROUP THAT DIDN'T.**



**SIR THOMAS
BOTELER**

CHURCH OF ENGLAND HIGH SCHOOL
THROUGH GOD, WE CARE

HIGH EXPECTATIONS
HIGH ASPIRATIONS
HIGH STANDARDS
YOU WILL SUCCEED

BOTELER.ORG.UK





**SIR THOMAS
BOTELER**

CHURCH OF ENGLAND HIGH SCHOOL
THROUGH GOD, WE CARE

HIGH EXPECTATIONS
HIGH ASPIRATIONS
HIGH STANDARDS
YOU WILL SUCCEED

BOTELER.ORG.UK





**SIR THOMAS
BOTELER**
CHURCH OF ENGLAND HIGH SCHOOL
THROUGH GOD, WE CARE

HIGH EXPECTATIONS
HIGH ASPIRATIONS
HIGH STANDARDS
YOU WILL SUCCEED

BOTELER.ORG.UK

The Iceberg Illusion

Success
is an
iceberg

SUCCESS!

WHAT PEOPLE
SEE

Persistence



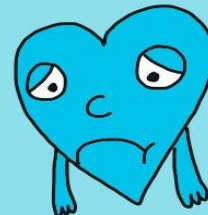
Failure



Sacrifice



Disappointment



WHAT PEOPLE
DON'T SEE

Dedication



Hard work



Discipline



@sylvia duckworth



**SIR THOMAS
BOTELER**

CHURCH OF ENGLAND HIGH SCHOOL
THROUGH GOD, WE CARE

HIGH EXPECTATIONS
HIGH ASPIRATIONS
HIGH STANDARDS
YOU WILL SUCCEED

BOTELER.ORG.UK

Ofsted
Good
Provider

WE ARE PART OF
TCAT
THE
CHALLENGE
ACADEMY
TRUST

MR. DAVIES

HEAD OF SCIENCE



SCIENCE REVISION – THE COURSE

To find the specification for the courses:

- Triple Science = AQA GCSE Biology / Chemistry / Physics
- Core Science = AQA GCSE Combined: Trilogy

Every student will sit six exams. Paper 1 & Paper 2 for each of the sciences.



**SIR THOMAS
BOTELER**
CHURCH OF ENGLAND HIGH SCHOOL
THROUGH GOD, WE CARE

HIGH EXPECTATIONS
HIGH ASPIRATIONS
HIGH STANDARDS
YOU WILL SUCCEED

BOTELER.ORG.UK

TOPICS

Biology Paper 1

- Cell Biology
- Organisation
- Infection and response
- Respiration
- Photosynthesis

Biology Paper 2

- Homeostasis & response
- Inheritance, variation & evolution
- Ecology



**SIR THOMAS
BOTELER**
CHURCH OF ENGLAND HIGH SCHOOL
THROUGH GOD, WE CARE

HIGH EXPECTATIONS
HIGH ASPIRATIONS
HIGH STANDARDS
YOU WILL SUCCEED

BOTELER.ORG.UK



**SIR THOMAS
BOTELER**
CHURCH OF ENGLAND HIGH SCHOOL
THROUGH GOD, WE CARE

HIGH EXPECTATIONS
HIGH ASPIRATIONS
HIGH STANDARDS
YOU WILL SUCCEED

BOTELER.ORG.UK

TOPICS

Chemistry Paper 1

- Atomic structure and Periodic table
- Bonding and properties of matter
- Quantitative Chemistry
- Chemical Changes
- Energy Changes

Chemistry Paper 2

- Rates of reaction
- Organic chemistry
- Chemical Analysis
- Chemistry of the atmosphere
- Earths resources

TOPICS

Physics Paper 1

- Energy
- Electricity
- Particle model of matter
- Atomic structure

Physics Paper 2

- Forces
- Waves
- Magnetism and electromagnetism
- Space (Physics only)



**SIR THOMAS
BOTELER**

CHURCH OF ENGLAND HIGH SCHOOL
THROUGH GOD, WE CARE

HIGH EXPECTATIONS
HIGH ASPIRATIONS
HIGH STANDARDS
YOU WILL SUCCEED

BOTELER.ORG.UK

PPE SCHEDULE

- Year 10 PPE June 25 = Modified Paper 1
- Year 11 PPE Nov 24 = Full Paper 1
- Year 11 PPE March 25 = Full or modified Paper 2



**SIR THOMAS
BOTELER**

CHURCH OF ENGLAND HIGH SCHOOL
THROUGH GOD, WE CARE

HIGH EXPECTATIONS
HIGH ASPIRATIONS
HIGH STANDARDS
YOU WILL SUCCEED

BOTELER.ORG.UK

THE DATES

Exam	Date
Biology paper 1	13 th May 2025 PM
Chemistry paper 1	19 th May 2025 AM
Physics paper 1	22 nd May 2025 AM
Biology paper 2	9 th June 2025 AM
Chemistry paper 2	13 th June 2025 AM
Physics paper 2	16 th June 2025 AM



**SIR THOMAS
BOTELER**

CHURCH OF ENGLAND HIGH SCHOOL
THROUGH GOD, WE CARE

HIGH EXPECTATIONS
HIGH ASPIRATIONS
HIGH STANDARDS
YOU WILL SUCCEED

BOTELER.ORG.UK



**SIR THOMAS
BOTELER**

CHURCH OF ENGLAND HIGH SCHOOL
THROUGH GOD, WE CARE

HIGH EXPECTATIONS
HIGH ASPIRATIONS
HIGH STANDARDS
YOU WILL SUCCEED

BOTELER.ORG.UK

KNOWLEDGE ORGANISER & KNOWLEDGE RETRIEVAL BOOKLETS

AQA GCSE Triple Science Knowledge Organiser

GCSE Biology Paper 1

Name: _____

Class: _____

Teacher: _____

B1: Cell structure
and transport



B2: Organisation



B3: Infection and
response



B4: Bioenergetics

How will I be assessed?

Written exam: 1 hour 45 minutes; Foundation or Higher Tier

100 marks

50% of GCSE

Questions: Multiple choice, structured, closed short answer and open response.

To achieve a **grade 5** candidates will be able to:

- demonstrate mostly accurate and appropriate knowledge and understanding and apply these mostly correctly to familiar and unfamiliar contexts, using mostly accurate scientific terminology
- use appropriate mathematical skills to perform multi-step calculations
- analyse qualitative and quantitative data to draw plausible conclusions supported by some evidence
- evaluate methodologies to suggest improvements to experimental methods, and comment on scientific conclusions

To achieve a **grade 8 or 9** candidates will be able to:

- demonstrate relevant and comprehensive knowledge and understanding and apply these correctly to both familiar and unfamiliar contexts using accurate scientific terminology
- use a range of mathematical skills to perform complex scientific calculations
- critically analyse qualitative and quantitative data to draw logical, well-evidenced conclusions
- critically evaluate and refine methodologies, and judge the validity of scientific conclusions

- Command Words
- Checklists
- Equations
- Required Practicals
- Key Themes
- Knowledge Retrieval
- Knowledge Application



**SIR THOMAS
BOTELER**
CHURCH OF ENGLAND HIGH SCHOOL
THROUGH GOD, WE CARE

HIGH EXPECTATIONS
HIGH ASPIRATIONS
HIGH STANDARDS
YOU WILL SUCCEED

BOTELER.ORG.UK

SAM LEARNING

[HOME](#)[WHAT WE DO ▾](#)[EVIDENCE ▾](#)[BLOG](#)[SUPPORT ▾](#)[CONTACT ▾](#)[LOGIN](#)

Two GCSE grades better with 30 minutes per week

A.I. driven personalised learning that helps reduce teacher workload and improves results.

Verified by Education Endowment Foundation and Fischer Family Trust Independent Research.

[Book a Demo](#)[Get In Touch](#)



**SIR THOMAS
BOTELER**

CHURCH OF ENGLAND HIGH SCHOOL
THROUGH GOD, WE CARE

HIGH EXPECTATIONS
HIGH ASPIRATIONS
HIGH STANDARDS
YOU WILL SUCCEED

BOTELER.ORG.UK

FLASHCARDS

Differentiation – cells specialise to perform a role

Have specific structures to do a job

Happens
early in
animal life

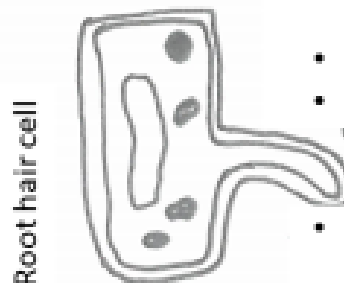
Plants
throughout
life can do
this



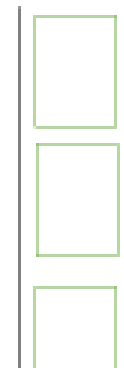
Many mitochondria
(link to respiration and energy)



- Haploid (1/2 chromosomes)
- Many mitochondria
- Acrosome

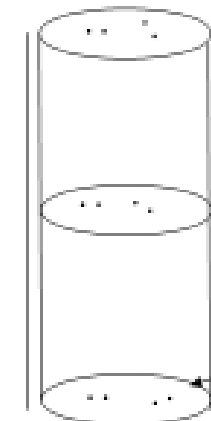


- No chloroplast
- Many mitochondria to actively transport minerals
- Large surface area to absorb water



XYLEM

- Dead cells
- Transports water and minerals
- unidirectional



PHLOEM

- Transports sugars
 - Up and down
 - Living cells
- Sieve plate

REQUIRED PRACTICALS

For every paper there are a number of required practicals that students need to know:

- The method
- The variables (Independent, dependent, control)
- Safety aspects

There are a number of video tutorials for each practical on youtube.



**SIR THOMAS
BOTELER**
CHURCH OF ENGLAND HIGH SCHOOL
THROUGH GOD, WE CARE

HIGH EXPECTATIONS
HIGH ASPIRATIONS
HIGH STANDARDS
YOU WILL SUCCEED

BOTELER.ORG.UK

EXAM QUESTIONS

Knowledge is brilliant but application is key.

Students will be seeing exam questions in lessons and in PPE's but the more practice the better.

There are a number of brilliant free websites that students can use which provide revision material and exam questions.

www.physicsandmathstutor.com

www.aqa.org.uk



**SIR THOMAS
BOTELER**

CHURCH OF ENGLAND HIGH SCHOOL
THROUGH GOD, WE CARE

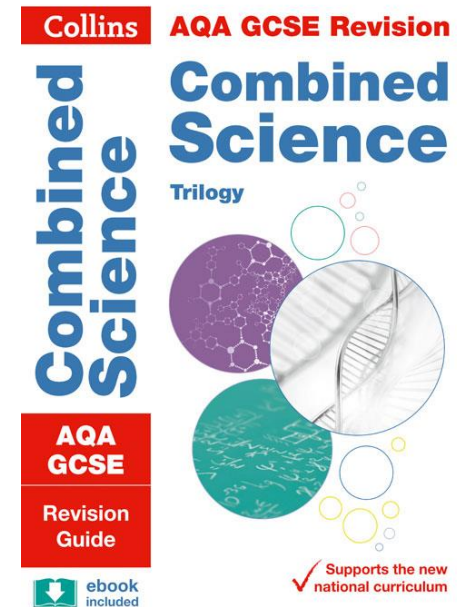
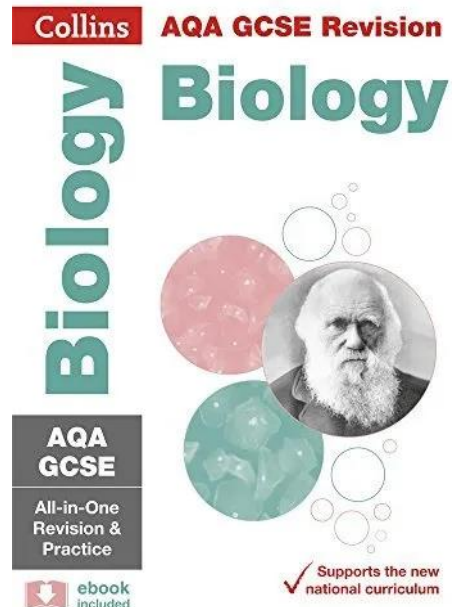
HIGH EXPECTATIONS
HIGH ASPIRATIONS
HIGH STANDARDS
YOU WILL SUCCEED

BOTELER.ORG.UK

REVISION GUIDES

These will be available to order through school soon, if you can't wait the ones we recommend are:

- AQA GCSE Combined Science Trilogy: Collins All-in-one
- AQA GCSE Biology/ Chemistry/ Physics: Collins All-in-one





**SIR THOMAS
BOTELER**

CHURCH OF ENGLAND HIGH SCHOOL
THROUGH GOD, WE CARE

HIGH EXPECTATIONS
HIGH ASPIRATIONS
HIGH STANDARDS
YOU WILL SUCCEED

BOTELER.ORG.UK



WE ARE PART OF



THE
CHALLENGE
ACADEMY
TRUST

MR. VALLENDER

**HEAD OF ENGLISH
ASSOCIATE ASSISTANT
HEADTEACHER**





**SIR THOMAS
BOTELER**

CHURCH OF ENGLAND HIGH SCHOOL
THROUGH GOD, WE CARE

HIGH EXPECTATIONS
HIGH ASPIRATIONS
HIGH STANDARDS
YOU WILL SUCCEED

BOTELER.ORG.UK

English Literature paper 1: 12th May 2025

Macbeth

Anthology Poetry

Mock exams November

English Literature paper 2: 20th May 2025

A Christmas Carol

Blood Brothers

Unseen Poetry

English Language paper 1: 23rd May 2025

Reading and Narrative writing

English Language paper 2: 6th June 2025

Reading and Viewpoint writing



HOW TO REVISE ENGLISH LITERATURE



**SIR THOMAS
BOTELER**

CHURCH OF ENGLAND HIGH SCHOOL
THROUGH GOD, WE CARE

HIGH EXPECTATIONS
HIGH ASPIRATIONS
HIGH STANDARDS
YOU WILL SUCCEED

BOTELER.ORG.UK

ENGLISH LITERATURE

GCSE KNOWLEDGE ORGANISER

NAME: _____

CLASS: _____

TEACHER: _____

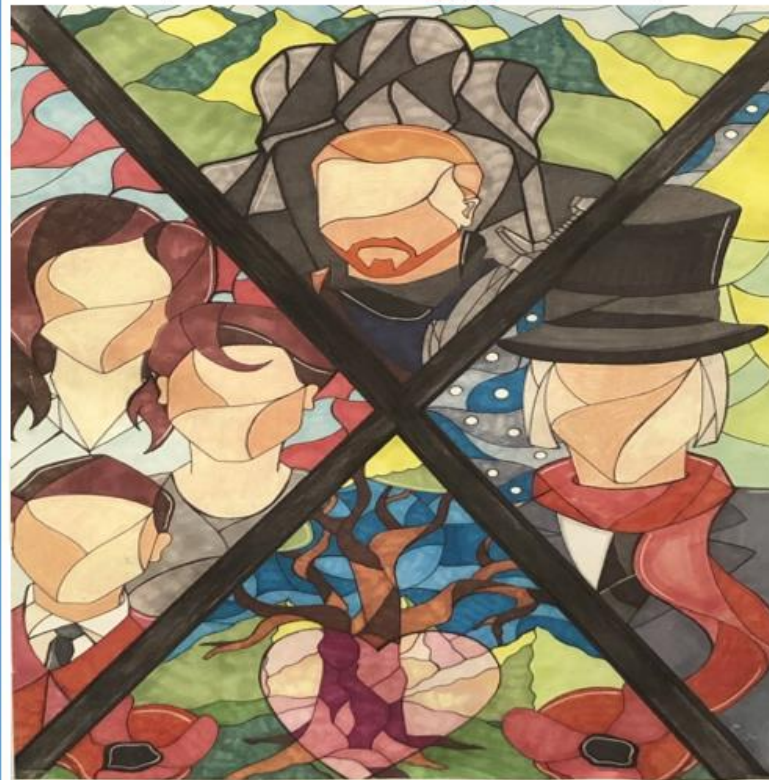


**SIR THOMAS
BOTELER**

CHURCH OF ENGLAND HIGH SCHOOL

THROUGH GOD, WE CARE

ENGLISH LITERATURE GCSE CURRICULUM





**SIR THOMAS
BOTELER**

CHURCH OF ENGLAND HIGH SCHOOL
THROUGH GOD, WE CARE

HIGH EXPECTATIONS
HIGH ASPIRATIONS
HIGH STANDARDS
YOU WILL SUCCEED

BOTELER.ORG.UK

MACBETH BY WILLIAM SHAKESPEARE

PLOT

Three witches tell the Scottish general Macbeth that he will be King of Scotland. Encouraged by his wife, Macbeth kills the king, becomes the new king, and kills more people out of paranoia. Civil war erupts to overthrow Macbeth, resulting in more death.



CHARACTERS

- DUNCAN, King of Scotland
- MALCOLM & DONALBAIN, his sons
- MACBETH General of the King's Army, afterwards King of Scotland
- LADY MACBETH
- BANQUO, General of the King's army
- FLEANCE, Son to Banquo
- MACDUFF, ROSS, MENTEITH, ANGUS, & others, nobles of Scotland

...al of the

MACBETH BY WILLIAM SHAKESPEARE

MACBETH KEY QUOTES

BRAVE	<p>'So foul and fair a day I have not seen.'</p> <ul style="list-style-type: none"> • Repetition of 'f' shows he is cursed: he echoes the witches' words • 'foul' shows he is offering a summary of death in the war • 'fair' shows they have won the war • Still brave and honoured
CONFLICTED	<p>'We will proceed no further in this business.'</p> <ul style="list-style-type: none"> • 'we' shows they are a team and that he regards his wife in high esteem • 'business' reveals that he cannot bring himself to discuss the murder of Duncan: it shows that he still has some sense of 'good' and is in conflict at this point in the play
GUILTY	<p>'Will all great Neptune's ocean wash this blood Clean from my hand?'</p> <ul style="list-style-type: none"> • Can't look upon the horror that he has committed • His language is broken and filled with questions to show that fear has taken over his mind • Use the god of the ocean to emphasise his feelings and fear of killing the king • His mind is stained with the consequences of his evil actions
PARANOID	<p>'O, full of scorpions is my mind, dear wife! Thou know'st that Banquo, and his Fleance, lives.'</p> <ul style="list-style-type: none"> • He is now paranoid over Banquo (he was there when the witches spoke to him) • He needs Banquo killed to protect his legacy • 'scorpions' is a metaphor for paranoia: Macbeth's mind is filled with venomous thoughts
EVIL	<p>'It will have blood; they say, blood will have blood/I am in blood/Stepp'd in so far that, should I wade no more...'</p> <ul style="list-style-type: none"> • Accepts his role as the villain • Macbeth has fallen into evil • Repetition of 'blood' shows his murderous obsession <p>'Life's but a walking shadow, a poor player...'</p> <ul style="list-style-type: none"> • Macbeth now realises that life is futile without his wife • He has had desperate news (his wife's death) but it is not a desperate speech • He is alone and ready to do final battle with Macduff <p>'Juggling fiends'</p> <ul style="list-style-type: none"> • He acknowledges he has been cursed • Will not kiss young Malcolm's feet but accepts his fate (still battle ready)



**SIR THOMAS
BOTELER**

CHURCH OF ENGLAND HIGH SCHOOL
THROUGH GOD, WE CARE

HIGH EXPECTATIONS
HIGH ASPIRATIONS
HIGH STANDARDS
YOU WILL SUCCEED

BOTELER.ORG.UK



SIR THOMAS BOTELER
CHURCH OF ENGLAND HIGH SCHOOL

THROUGH GOD, WE CARE

REVISION MAP FOR ENGLISH

NARRATIVE SUPPORT SESSIONS HELD AT LUNCH TIME (SEE MR VALLENDER)

MONTH	WHAT SHOULD I BE REVISING?	MOCK/REAL EXAM
October	Literature: <ul style="list-style-type: none"> Macbeth cue cards Lady Macbeth cue cards Poems: The Manhunt/London/Valentine/Hawk Roosting/The Prelude 	
November	Literature: <ul style="list-style-type: none"> Macbeth cue cards Lady Macbeth cue cards Poems: The Manhunt/London/Valentine/Hawk Roosting/ The Prelude Language: <ul style="list-style-type: none"> Narrative piece (paper 1) Viewpoint writing (paper 2) 	
December	Literature: <ul style="list-style-type: none"> Macbeth cue cards Lady Macbeth cue cards Poems: The Manhunt/London/Valentine/Hawk Roosting Language: <ul style="list-style-type: none"> Narrative piece (paper 1) Viewpoint writing (paper 2) 	Mock exams: <ul style="list-style-type: none"> Language paper 1 Language paper 2 Mock exams: <ul style="list-style-type: none"> Literature paper 1: Macbeth
January	Literature: <ul style="list-style-type: none"> A Christmas Carol cue cards Blood Brothers cue cards ALL poems Language: <ul style="list-style-type: none"> Narrative piece (paper 1) Viewpoint writing (paper 2) 	



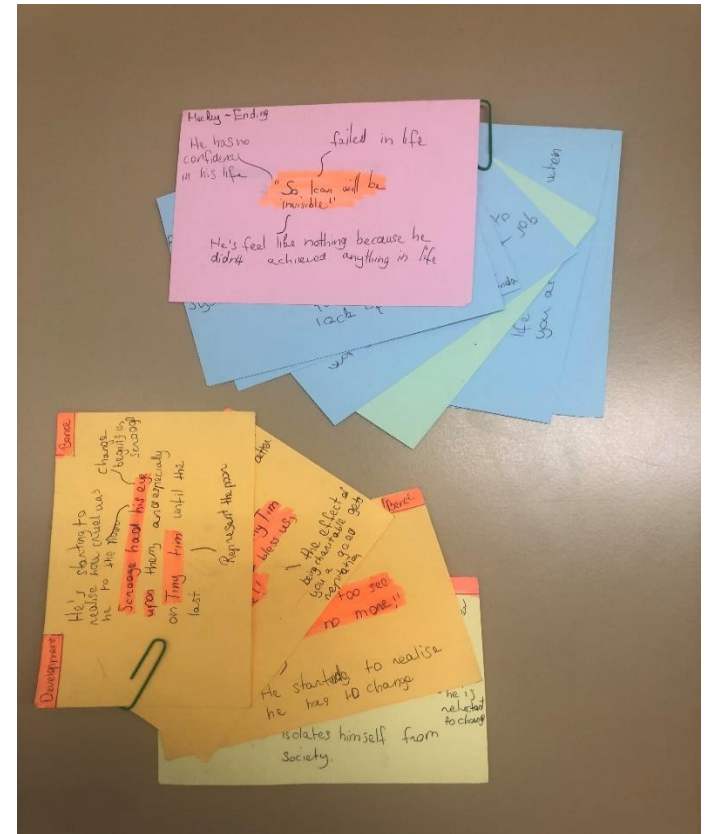
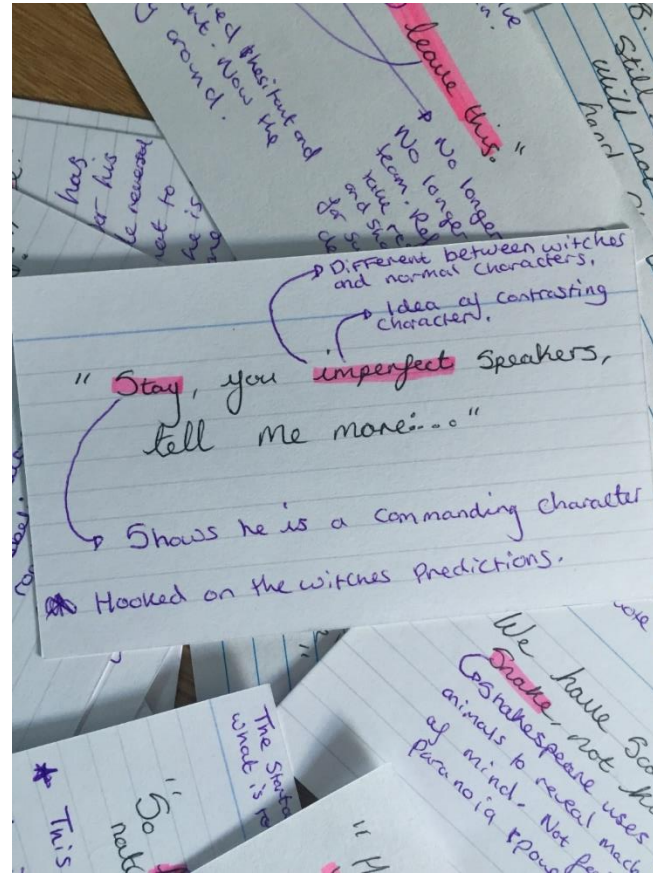
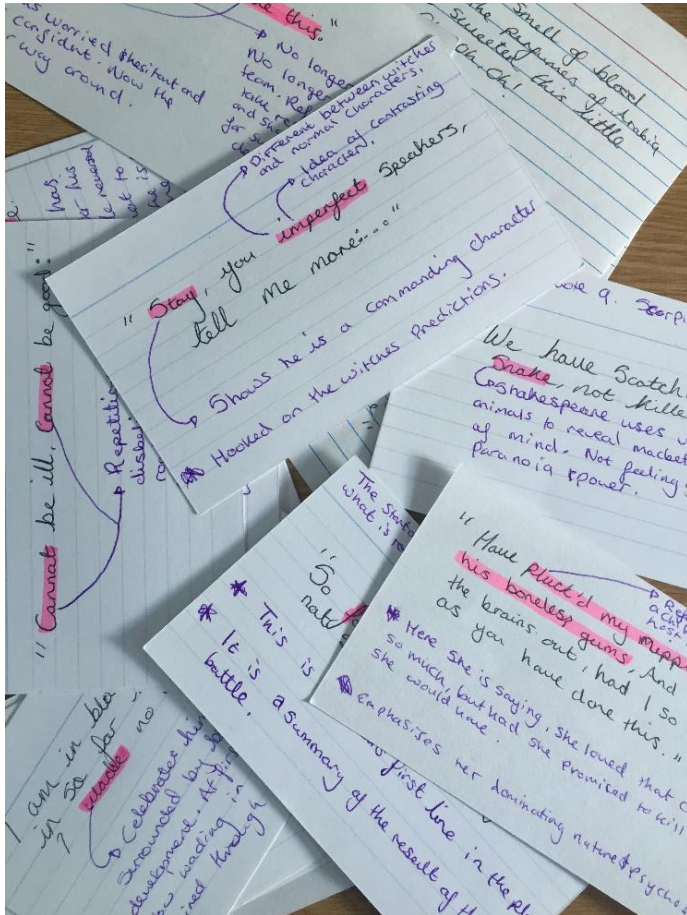
**SIR THOMAS
BOTELER**

CHURCH OF ENGLAND HIGH SCHOOL
THROUGH GOD, WE CARE

HIGH EXPECTATIONS
HIGH ASPIRATIONS
HIGH STANDARDS
YOU WILL SUCCEED

BOTELER.ORG.UK

REVISE



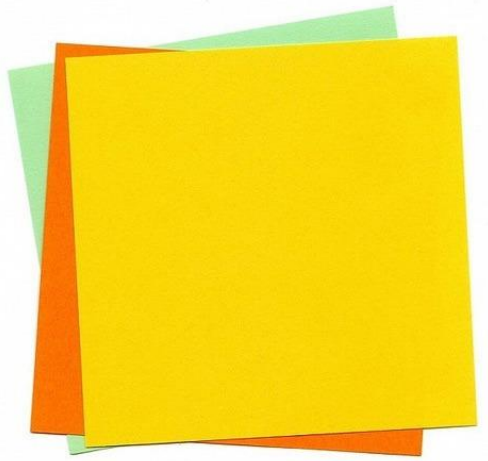


**SIR THOMAS
BOTELER**
CHURCH OF ENGLAND HIGH SCHOOL
THROUGH GOD, WE CARE

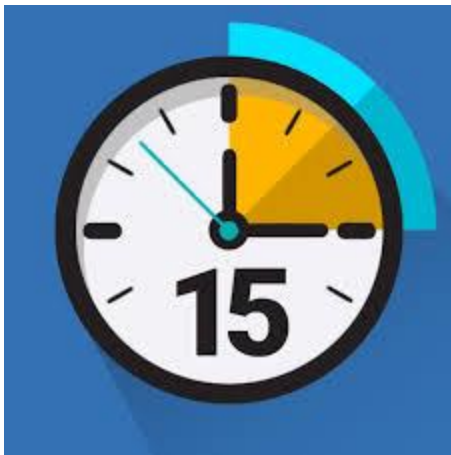
HIGH EXPECTATIONS
HIGH ASPIRATIONS
HIGH STANDARDS
YOU WILL SUCCEED

BOTELER.ORG.UK

YEAR 10 REPEAT



Monday	Tuesday	Wednesday	Thursday	Friday
Mickey key quotes Eddie Key quote		Mrs Johnstone key quotes Mrs Lyons key quotes		



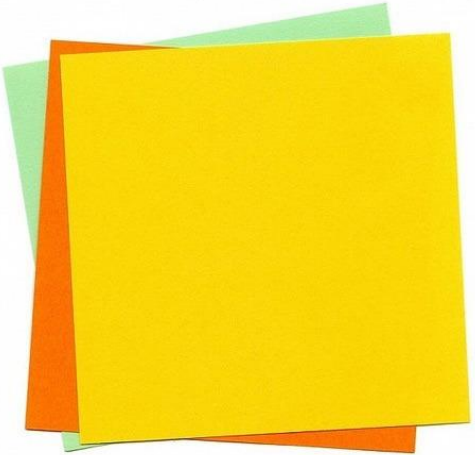


**SIR THOMAS
BOTELER**
CHURCH OF ENGLAND HIGH SCHOOL
THROUGH GOD, WE CARE

HIGH EXPECTATIONS
HIGH ASPIRATIONS
HIGH STANDARDS
YOU WILL SUCCEED

BOTELER.ORG.UK

YEAR 11 REPEAT



Monday	Tuesday	Wednesday	Thursday	Friday
Macbeth key quotes		Lady Macbeth key quotes	Narrative	





**SIR THOMAS
BOTELER**

CHURCH OF ENGLAND HIGH SCHOOL
THROUGH GOD, WE CARE

HIGH EXPECTATIONS
HIGH ASPIRATIONS
HIGH STANDARDS
YOU WILL SUCCEED

BOTELER.ORG.UK

RESILIENCE

At the beginning of the play, Lady Macbeth is presented as manipulative during her soliloquy when she receives news of the witches' prophecy and reflects on Macbeth's character flaws, stating he is "too full o' the milk of human kindness." Here, it is revealed that she understands that her husband's morals will inconvenience her plans to gain power. Also, the noun 'milk' has connotations of innocence and purity - something that she ultimately strips Macbeth of. This may foreshadow his downfall from 'fair' to 'foul' and it could possibly highlight how this will result in Lady Macbeth's own demise. Perhaps Shakespeare is demonstrating to the Jacobean audience how Lady Macbeth subverts the traditional characteristics of a woman and is the antithesis of a wife at that time.



**SIR THOMAS
BOTELER**

CHURCH OF ENGLAND HIGH SCHOOL
THROUGH GOD, WE CARE

HIGH EXPECTATIONS
HIGH ASPIRATIONS
HIGH STANDARDS
YOU WILL SUCCEED

BOTELER.ORG.UK

RESILIENCE

At the opening of the play, Shakespeare presents lady Macbeth as manipulative through the quote "Milk of human kindness" this quote implies how pure she is yet manipulative towards Macbeth. This quote shows that she is her natural self and how understanding she is of Macbeth's kindness at the beginning of this play which is a contrast to the end.



**SIR THOMAS
BOTELER**
CHURCH OF ENGLAND HIGH SCHOOL

THROUGH GOD, WE CARE

HIGH EXPECTATIONS
HIGH ASPIRATIONS
HIGH STANDARDS
YOU WILL SUCCEED

BOTELER.ORG.UK

REVISE SMART



New Screen



Delete



Duplicate



Picture



B

/

U

T

π

X_2

X^2

$\frac{a}{b}$

T

π



Save



Preview



Publish

Pedagogy mode:

☒ Test ☐ Revise

Screens

1



2



3



4



5



Information

Key links

Summary notes and analysis

Mock/predicted questions



**SIR THOMAS
BOTELER**

CHURCH OF ENGLAND HIGH SCHOOL
THROUGH GOD, WE CARE

HIGH EXPECTATIONS
HIGH ASPIRATIONS
HIGH STANDARDS
YOU WILL SUCCEED

BOTELER.ORG.UK

HOW TO REVISE ENGLISH LANGUAGE

ENGLISH LANGUAGE

GCSE KNOWLEDGE ORGANISER

NAME: _____

CLASS: _____

TEACHER: _____



**SIR THOMAS
BOTELER**

CHURCH OF ENGLAND HIGH SCHOOL

THROUGH GOD, WE CARE

ENGLISH LANGUAGE GCSE CURRICULUM

Paper 1 and 2 will require you to read unseen fiction and non-fiction:

How to approach:

- Summarise each paragraph in the margin
- Number names
- Circle key information
- Underline place names
- Decoding skills (challenging vocabulary: do we recognise the prefix? Do we recognise the root word? Is the word positive or negative?)

AQA

Please write clearly in black capital letters.

Centre number:

Candidate number:

Surname: _____

Forename(s): _____

Candidate signature: _____

**GCSE
ENGLISH LANGUAGE**

Paper 1 Explorations in creative reading and writing

Tuesday 4 June 2019 Morning Time allowed: 1 hour 45 minutes

Materials

For this paper you must have:

- **Resource A** – provided as a separate insert

Instructions

- Answer all questions.
- Use black ink or black ball-point pen.
- Fill in the boxes at the top of this page.
- Do not write on the questions or the spaces provided.
- Do not write outside the box around each question or on lined paper.
- If you need extra space for your answers, use the third page at the end of this book. Write the question number against your answers.
- Do all rough work in this book. Cross through any work you do not want to be marked.
- You must write in the space provided.
- You must not use a dictionary.

Information

- The marks for questions are shown in brackets.
- The maximum mark for this paper is 40.
- There are 40 marks for Section A and 40 marks for Section B.
- You are assessed on the quality of your English and your presentation in your answers.
- You will be assessed on the quality of your writing in Section B.
- You will be assessed on the quality of your writing in Section B.

Advice

- You are allowed to spend about 10 minutes reading through the paper and all five questions you have to answer.
- You are allowed to plan your answer to Question 5 before you start to write.
- You should make sure you have sufficient time to check your answers.



8700/2

AQA

Please write clearly in black capital letters.

Centre number:

Candidate number:

Surname: _____

Forename(s): _____

Candidate signature: _____

**GCSE
ENGLISH LANGUAGE**

Paper 2 Writers' viewpoints and perspectives

Friday 7 June 2019 Morning Time allowed: 1 hour 45 minutes

Materials

For this paper you must have:

- **Resource A** and **Resource B** – which are provided as a separate insert

Instructions

- Answer all questions.
- Use black ink or black ball-point pen.
- Fill in the boxes at the top of this page.
- Do not write on the questions or the spaces provided.
- Do not write outside the box around each question or on lined paper.
- Do all rough work in this book. Cross through any work you do not want to be marked.
- If you need extra space for your answers, use the third page at the end of this book. Write the question number against your answers.
- You must write in the space provided.
- You must not use a dictionary.

Information

- The marks for questions are shown in brackets.
- The maximum mark for this paper is 40.
- There are 40 marks for Section A and 40 marks for Section B.
- You are assessed on the quality of your English and your presentation in your answers.
- You will be assessed on the quality of your writing in Section B.
- You will be assessed on the quality of your writing in Section B.

Advice

- You are allowed to spend about 10 minutes reading through the paper and all five questions you have to answer.
- You are allowed to plan your answer to Question 5 before you start to write.
- You should make sure you have sufficient time to check your answers.



8700/2



**SIR THOMAS
BOTELER**

CHURCH OF ENGLAND HIGH SCHOOL
THROUGH GOD, WE CARE

HIGH EXPECTATIONS
HIGH ASPIRATIONS
HIGH STANDARDS
YOU WILL SUCCEED

BOTELER.ORG.UK

REVISE THE NARRATIVE

50% OF THE GRADE





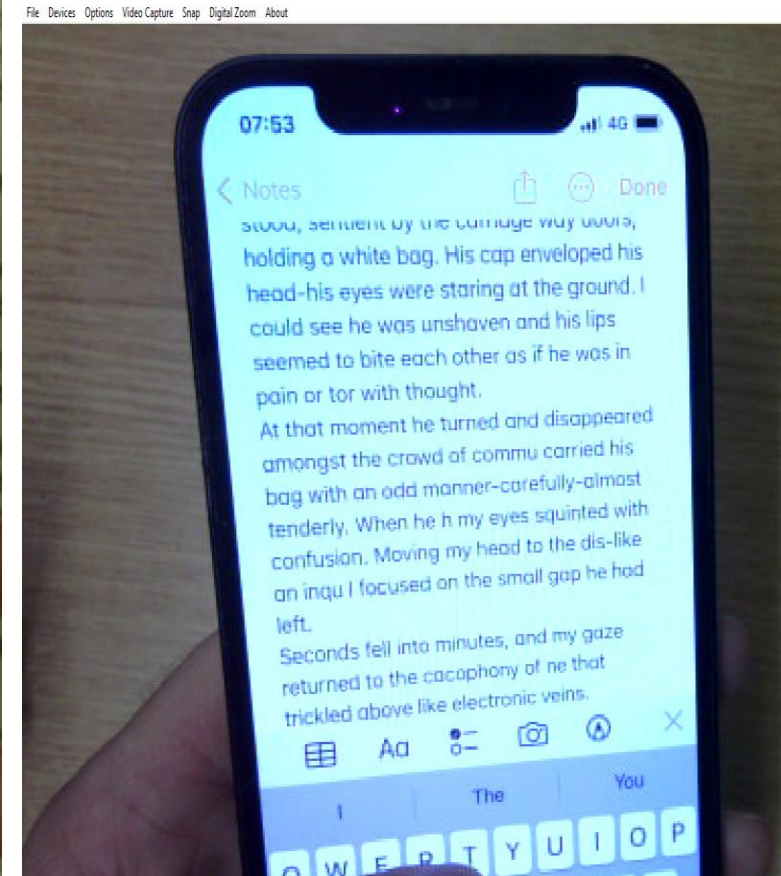
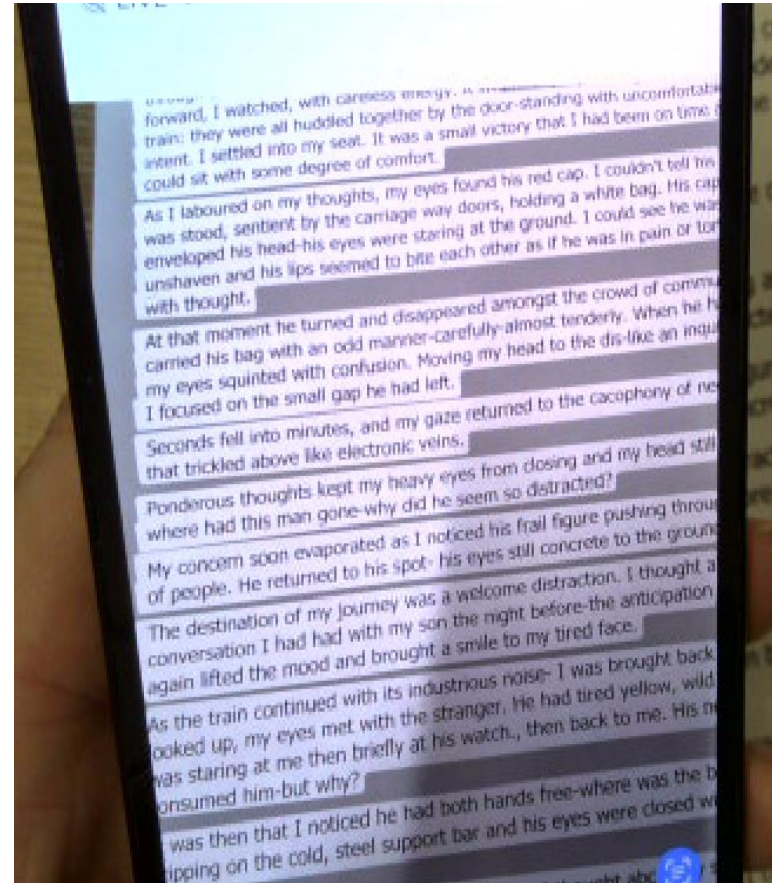
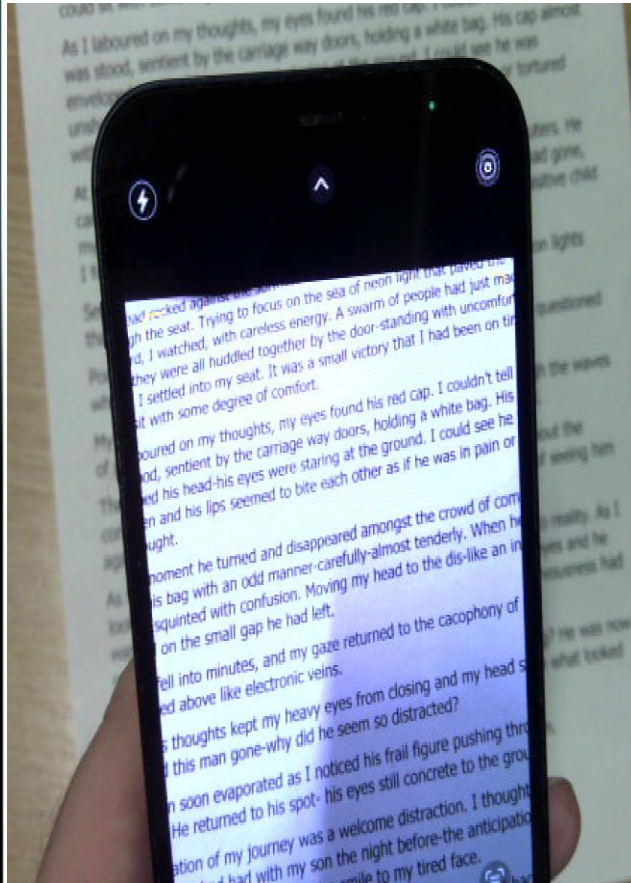
**SIR THOMAS
BOTELER**

CHURCH OF ENGLAND HIGH SCHOOL
THROUGH GOD, WE CARE

HIGH EXPECTATIONS
HIGH ASPIRATIONS
HIGH STANDARDS
YOU WILL SUCCEED

BOTELER.ORG.UK

Take a picture and copy into notes on your phone.





**SIR THOMAS
BOTELER**

CHURCH OF ENGLAND HIGH SCHOOL
THROUGH GOD, WE CARE

HIGH EXPECTATIONS
HIGH ASPIRATIONS
HIGH STANDARDS
YOU WILL SUCCEED

BOTELER.ORG.UK

Once you have it in your notes you can use google translate to read it to you (in small sections)

Google

google translate

English to Tagalog English English spanish English to French English to Urdu Apps

About 4,940,000,000 results (0.28 seconds)

Japanese English

Gingerly, he struggled through the sharp grass. He observed her auburn hair sticking to her face as he

Gingerly, he struggled through the sharp grass. He observed her auburn hair sticking to her face as he battled the

Google

google translate

English to Tagalog English English spanish English to French English to Urdu App

About 4,940,000,000 results (0.28 seconds)

English – detected Japanese

Gingerly, he struggled through the sharp grass. He observed her auburn hair sticking to her face as he

彼は慎重に鋭い草の間を苦労して通り抜けた。彼は翡翠草と格闘しながら、彼女の赤褐色の髪が彼女の顔に張り付くのを観察した。彼は、かつて青ざめていた彼



**SIR THOMAS
BOTELER**
CHURCH OF ENGLAND HIGH SCHOOL
THROUGH GOD, WE CARE

HIGH EXPECTATIONS
HIGH ASPIRATIONS
HIGH STANDARDS
YOU WILL SUCCEED

BOTELER.ORG.UK

Record the story by reading into your phone. Play it back. Put your earphones/pods on and relax listening to it.





**SIR THOMAS
BOTELER**
CHURCH OF ENGLAND HIGH SCHOOL
THROUGH GOD, WE CARE

HIGH EXPECTATIONS
HIGH ASPIRATIONS
HIGH STANDARDS
YOU WILL SUCCEED

BOTELER.ORG.UK

RESILIENCE

- The real exam will give you 45 minutes.
- Can you get it down to 35?
- Add the extra time to preparing the reading section.



**SIR THOMAS
BOTELER**

CHURCH OF ENGLAND HIGH SCHOOL
THROUGH GOD, WE CARE

HIGH EXPECTATIONS
HIGH ASPIRATIONS
HIGH STANDARDS
YOU WILL SUCCEED

BOTELER.ORG.UK

Ofsted
Good
Provider

WE ARE PART OF
TCAT
THE
CHALLENGE
ACADEMY
TRUST

MR. ALLEN

HEAD OF MATHEMATICS





**SIR THOMAS
BOTELER**
CHURCH OF ENGLAND HIGH SCHOOL
THROUGH GOD, WE CARE

HIGH EXPECTATIONS
HIGH ASPIRATIONS
HIGH STANDARDS
YOU WILL SUCCEED

BOTELER.ORG.UK

THINGS WE AGREE NEVER TO SAY AGAIN:

"I was never any good at Maths"

"I didn't like Maths (or possibly... my Maths teacher) at School"

"Look at (Insert celebrity or vague relation) they've done really well without Maths"

"I found Maths really difficult when I was at school"



**SIR THOMAS
BOTELER**
CHURCH OF ENGLAND HIGH SCHOOL
THROUGH GOD, WE CARE

HIGH EXPECTATIONS
HIGH ASPIRATIONS
HIGH STANDARDS
YOU WILL SUCCEED

BOTELER.ORG.UK

Mathematics paper 1: Thursday 15th May 2025
Non-Calculator (80 marks)

Mathematics paper 2: Wednesday 4th June 2025
Calculator (80 marks)

Mathematics paper 3: Wednesday 11th June 2025
Calculator (80 marks)

All exams have a duration of 90 minutes.

HOW TO REVISE

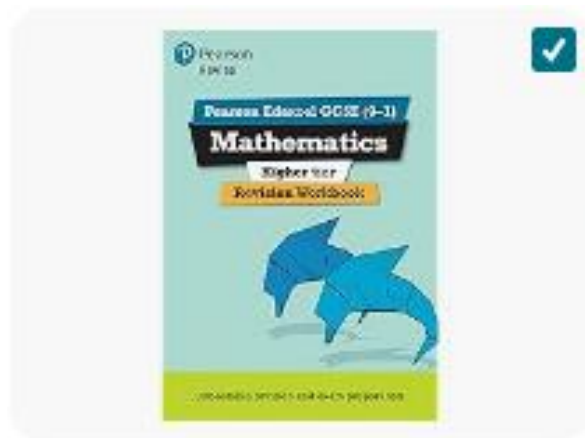


**SIR THOMAS
BOTELER**

CHURCH OF ENGLAND HIGH SCHOOL
THROUGH GOD, WE CARE

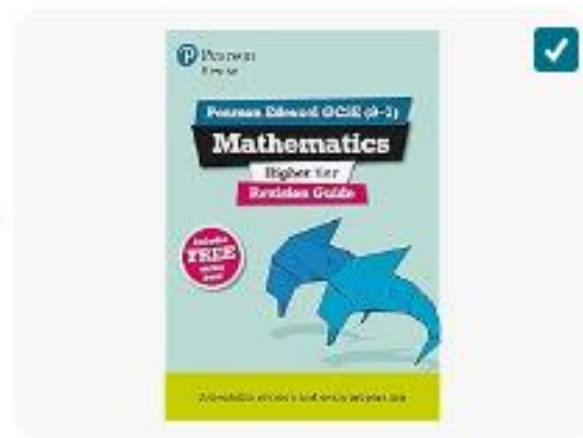
HIGH EXPECTATIONS
HIGH ASPIRATIONS
HIGH STANDARDS
YOU WILL SUCCEED

BOTELER.ORG.UK



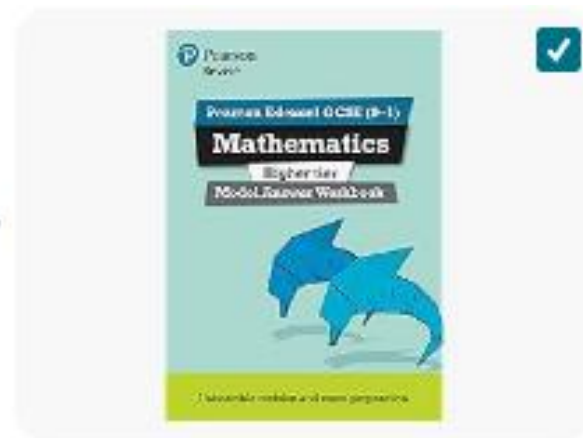
This item: Pearson REVISE
Edexcel GCSE Mathematics
(Higher) Revision Workbook -...

+



Pearson REVISE Edexcel GCSE
Maths (Higher): Revision Guide
incl. online revision, quizzes a...

+



Pearson REVISE Edexcel GCSE
(9-1) Mathematics Higher Model
Answer Workbook: For 2024 a...



**SIR THOMAS
BOTELER**

CHURCH OF ENGLAND HIGH SCHOOL
THROUGH GOD, WE CARE

HIGH EXPECTATIONS
HIGH ASPIRATIONS
HIGH STANDARDS
YOU WILL SUCCEED

BOTELER.ORG.UK

Sir Thomas Boteler

Maths Key Piece

Version C Test 1

Name _____

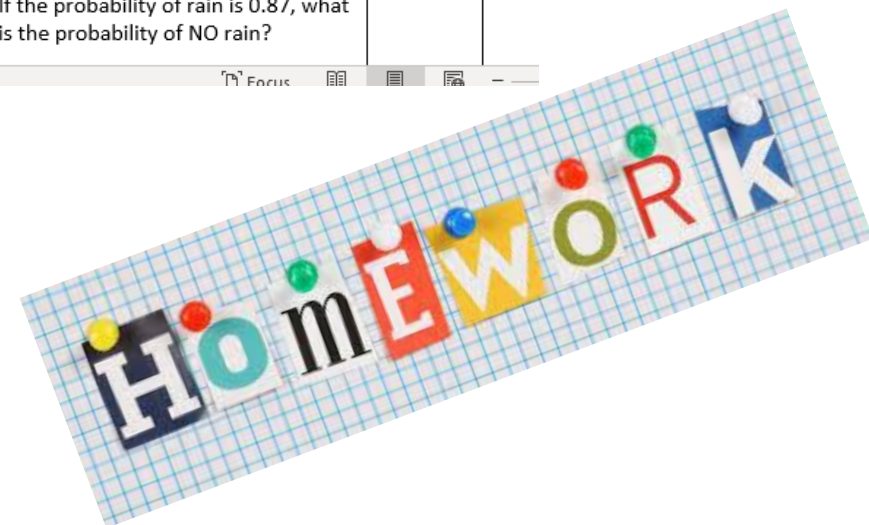
Date _____

Class _____



Section A: Numbers & Calculating		Section B: Algebra & Shape, Space & Measures		Section C: Using & Applying	
1. Divide thirty-one point five by ten.		11. Solve: $2x - 5 = 7$		21. What is the mean of; 2, 3, 4, 4, 5, 6	
2. Round 17.64 to the nearest whole number.		12. Find the next term of this sequence 1 1 2 3 5 ...			
3. Which is bigger, 40% of 90 or $\frac{1}{2}$ of 80?		13. If $y = 3x + 2$, find the value of y when $x = -2$		22. Three angles in a quadrilateral add up to 275 degrees. What is the size of the fourth angle?	
4. Put these in order of size, smallest first. 60% 0.4 $\frac{1}{2}$		14. Expand $4(3x + 2)$		23. Work out the area of a triangle of base 6cm and height 8cm.	
5. What is the fraction twelve twentieths in its simplest form?		15. Factorise $12y - 16$			
6. Which is bigger: $\frac{3}{7}$ or $\frac{2}{5}$?		16. Simplify $3a + 2b - a + 4b$		24. If the probability of rain is 0.87, what is the probability of NO rain?	
7. Increase £30 by 35%					
8. Divide £300 in a ratio of 3:7					

English (United Kingdom)



SAM
Learning



**SIR THOMAS
BOTELER**
CHURCH OF ENGLAND HIGH SCHOOL
THROUGH GOD, WE CARE

HIGH EXPECTATIONS
HIGH ASPIRATIONS
HIGH STANDARDS
YOU WILL SUCCEED

BOTELER.ORG.UK



**SIR THOMAS
BOTELER**
CHURCH OF ENGLAND HIGH SCHOOL
THROUGH GOD, WE CARE

GRAMMAR SCHOOL ROAD
LATCHFORD, WARRINGTON,
CHESHIRE, WA4 1JL
01925 636414
INFO@BOTELER.ORG.UK
WWW.BOTELER.ORG.UK
/THOMASBOTELER

YEAR 11 -REVISION GUIDANCE FOUNDATION

- Key Dates
- Exam Details
- 2024 Grade Boundaries
- Revision Checklist
- Useful Resources



PART OF THE CHALLENGE ACADEMY TRUST

TCAT, C/O BRIDGEWATER HIGH SCHOOL, BROOKFIELD ROAD,
WARRINGTON, WA4 3AE • COMPANY # 30689247 • VAT # 296154966



THE CHURCH
OF ENGLAND

• HIGH EXPECTATIONS | HIGH ASPIRATIONS | HIGH STANDARDS | YOU WILL SUCCEED



**SIR THOMAS
BOTELER**
CHURCH OF ENGLAND HIGH SCHOOL
THROUGH GOD, WE CARE

GRAMMAR SCHOOL ROAD
LATCHFORD, WARRINGTON,
CHESHIRE, WA4 1JL
01925 636414
INFO@BOTELER.ORG.UK
WWW.BOTELER.ORG.UK
/THOMASBOTELER

YEAR 11 -REVISION GUIDANCE HIGHER

- Key Dates
- Exam Details
- 2024 Grade Boundaries
- Revision Checklist
- Useful Resources



PART OF THE CHALLENGE ACADEMY TRUST

TCAT, C/O BRIDGEWATER HIGH SCHOOL, BROOKFIELD ROAD,
WARRINGTON, WA4 3AE • COMPANY # 30689247 • VAT # 296154966



THE CHURCH
OF ENGLAND

• HIGH EXPECTATIONS | HIGH ASPIRATIONS | HIGH STANDARDS | YOU WILL SUCCEED

YEAR 10



**SIR THOMAS
BOTELER**
CHURCH OF ENGLAND HIGH SCHOOL
THROUGH GOD, WE CARE

HIGH EXPECTATIONS
HIGH ASPIRATIONS
HIGH STANDARDS
YOU WILL SUCCEED

BOTELER.ORG.UK

Embrace the system:

- Assessment lesson fortnightly – work towards this
- Individualised SAM home works set to help you improve
- Fortnightly written homework – Do it to the best of your ability and well ahead of the deadline
- Believe in your book!



**SIR THOMAS
BOTELER**
CHURCH OF ENGLAND HIGH SCHOOL
THROUGH GOD, WE CARE

HIGH EXPECTATIONS
HIGH ASPIRATIONS
HIGH STANDARDS
YOU WILL SUCCEED

BOTELER.ORG.UK

RESILIENCE

SELF BELIEF

STRUCTURE

REPETITION



**SIR THOMAS
BOTELER**

CHURCH OF ENGLAND HIGH SCHOOL
THROUGH GOD, WE CARE

HIGH EXPECTATIONS
HIGH ASPIRATIONS
HIGH STANDARDS
YOU WILL SUCCEED

BOTELER.ORG.UK



MR S. MASON

**ASSOCIATE ASSISTANT
HEADTEACHER**





**SIR THOMAS
BOTELER**
CHURCH OF ENGLAND HIGH SCHOOL
THROUGH GOD, WE CARE

HIGH EXPECTATIONS
HIGH ASPIRATIONS
HIGH STANDARDS
YOU WILL SUCCEED

BOTELER.ORG.UK

WORKING MEMORY – LONG TERM MEMORY



**SIR THOMAS
BOTELER**

CHURCH OF ENGLAND HIGH SCHOOL
THROUGH GOD, WE CARE

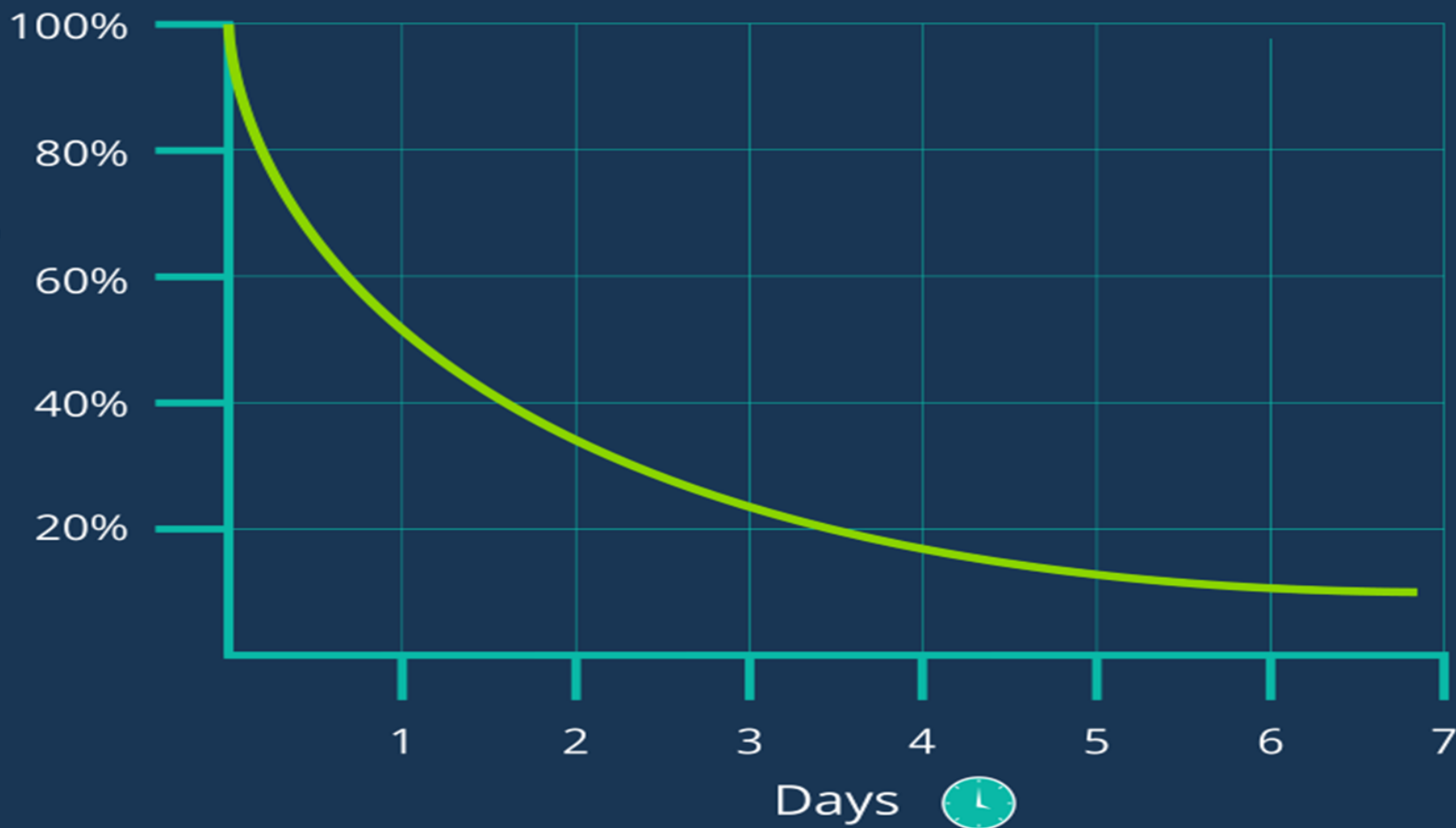
HIGH EXPECTATIONS
HIGH ASPIRATIONS
HIGH STANDARDS
YOU WILL SUCCEED

BOTELER.ORG.UK



Retention

THE FORGETTING CURVE



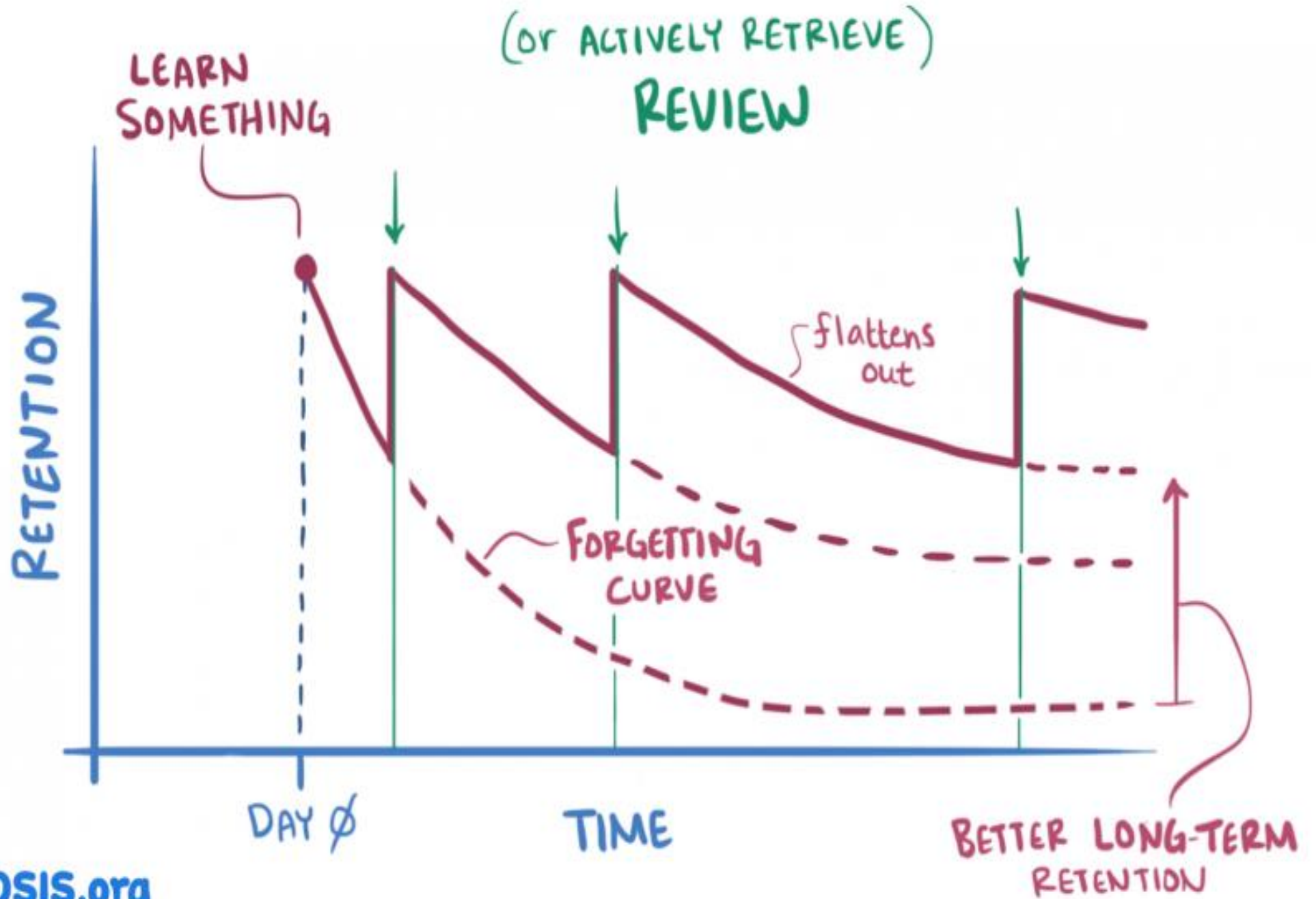


**SIR THOMAS
BOTELER**

CHURCH OF ENGLAND HIGH SCHOOL
THROUGH GOD, WE CARE

HIGH EXPECTATIONS
HIGH ASPIRATIONS
HIGH STANDARDS
YOU WILL SUCCEED

BOTELER.ORG.UK





**SIR THOMAS
BOTELER**

CHURCH OF ENGLAND HIGH SCHOOL
THROUGH GOD, WE CARE

HIGH EXPECTATIONS
HIGH ASPIRATIONS
HIGH STANDARDS
YOU WILL SUCCEED

BOTELER.ORG.UK

1. BRAIN DUMPS



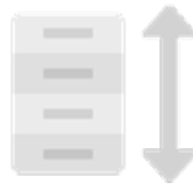
**SIR THOMAS
BOTELER**

CHURCH OF ENGLAND HIGH SCHOOL
THROUGH GOD, WE CARE

HIGH EXPECTATIONS
HIGH ASPIRATIONS
HIGH STANDARDS
YOU WILL SUCCEED

BOTELER.ORG.UK

BRAIN DUMPS



1.	2.	3.	4.	5.
Identify knowledge	Write it down	Organise information	Check understanding	Store and compare
Identify the knowledge/topic area you want to cover.	Take a blank piece of paper/white board and write down everything you can remember about that topic. (with no prompts) Give yourself a timed limit (e.g. 10 minutes)	Once complete and you cannot remember any more use different colours to highlight/underline words in groups. This categories/links information.	Compare your brain dump to your K/O or book and check understanding. Add any key information you have missed (key words) in a different colour.	Keep your brain dump safe and revisit it. Next time you attempt the same topic try and complete the same amount of information in a shorter period of time or add more information.

Brain dumps are a way of getting information out of your brain.



**SIR THOMAS
BOTELER**

CHURCH OF ENGLAND HIGH SCHOOL
THROUGH GOD, WE CARE

HIGH EXPECTATIONS
HIGH ASPIRATIONS
HIGH STANDARDS
YOU WILL SUCCEED

BOTELER.ORG.UK

2. MIND MAPS

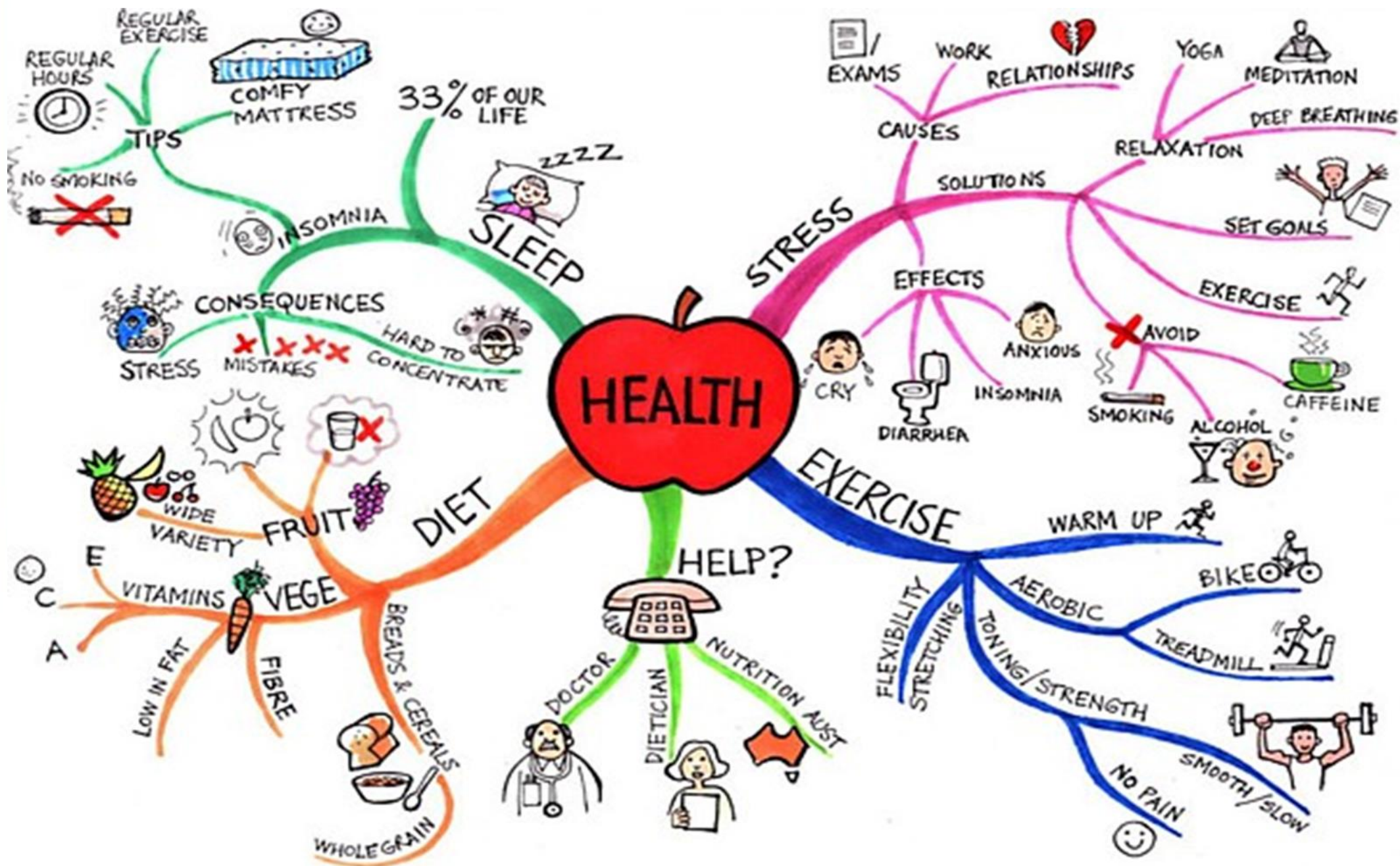


**SIR THOMAS
BOTELER**

CHURCH OF ENGLAND HIGH SCHOOL
THROUGH GOD, WE CARE

HIGH EXPECTATIONS
HIGH ASPIRATIONS
HIGH STANDARDS
YOU WILL SUCCEED

BOTELER.ORG.UK





**SIR THOMAS
BOTELER**

CHURCH OF ENGLAND HIGH SCHOOL
THROUGH GOD, WE CARE

HIGH EXPECTATIONS
HIGH ASPIRATIONS
HIGH STANDARDS
YOU WILL SUCCEED

BOTELER.ORG.UK

3. SELF QUIZZING



**SIR THOMAS
BOTELER**

CHURCH OF ENGLAND HIGH SCHOOL
THROUGH GOD, WE CARE

HIGH EXPECTATIONS
HIGH ASPIRATIONS
HIGH STANDARDS
YOU WILL SUCCEED

BOTELER.ORG.UK



1.

Identify knowledge

Identify knowledge/content you wish to cover.



2.

Review and create

Spend around 5-10 minutes reviewing content (knowledge organisers/class notes/text book)

Create x10 questions on the content (If your teacher has not provided you with questions)



3.

Cover and answer

Cover up your knowledge and answer the questions from memory.

Take your time and where possible answer in full sentences.



4.

Self mark & reflect

Go back to the content and self mark your answers in **green** pen.



5.

Next time

Revisit the areas where there were gaps in knowledge, and include these same questions next time.

Ensure that you complete all subjects and all topics – not just the subjects you enjoy the most of find easiest.

Practice makes perfect!



**SIR THOMAS
BOTELER**

CHURCH OF ENGLAND HIGH SCHOOL
THROUGH GOD, WE CARE

HIGH EXPECTATIONS
HIGH ASPIRATIONS
HIGH STANDARDS
YOU WILL SUCCEED

BOTELER.ORG.UK

4. DUAL CODING



**SIR THOMAS
BOTELER**

CHURCH OF ENGLAND HIGH SCHOOL
THROUGH GOD, WE CARE

HIGH EXPECTATIONS
HIGH ASPIRATIONS
HIGH STANDARDS
YOU WILL SUCCEED

BOTELER.ORG.UK

Summary: Dual Coding

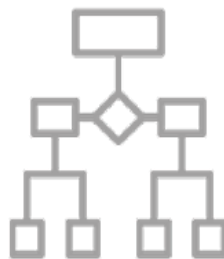
Dual coding is the process of blending both **words** and **pictures** while learning. Viewing those two formats gives us **two different representations** of the **same** piece of information.



1.

Drawings

These boost learning by getting you to think deeply about information.



2.

Diagrams

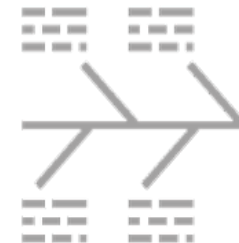
These are helpful for breaking down complex concepts or processes to make them easier to understand.



3.

Posters

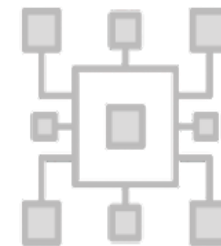
These are great for combining writing, pictures and diagrams all within one page of information.



4.

Timelines

These can be used of information that happens in a particular order or sequence.



5.

Graphic organisers

These organise verbal and visual information by the relationships between different concepts. Examples include tree diagrams, mind maps and Venn diagrams.

4 Key Principles for using dual coding



Cut - Reduce the amount of content, be selective and only use the most important information.



Chunk - Divide the content into groups of related information;



Align - Make sure that words and pictures are neatly ordered, making them easier to read;



Restrain - Avoid "overdoing" it. In other words, don't go crazy with different colours and fonts.



**SIR THOMAS
BOTELER**

CHURCH OF ENGLAND HIGH SCHOOL
THROUGH GOD, WE CARE

HIGH EXPECTATIONS
HIGH ASPIRATIONS
HIGH STANDARDS
YOU WILL SUCCEED

BOTELER.ORG.UK





**SIR THOMAS
BOTELER**

CHURCH OF ENGLAND HIGH SCHOOL
THROUGH GOD, WE CARE

HIGH EXPECTATIONS
HIGH ASPIRATIONS
HIGH STANDARDS
YOU WILL SUCCEED

BOTELER.ORG.UK

HOW DO YOU FEEL AFTER A BAD NIGHT'S SLEEP?



**SIR THOMAS
BOTELER**

CHURCH OF ENGLAND HIGH SCHOOL
THROUGH GOD, WE CARE

HIGH EXPECTATIONS
HIGH ASPIRATIONS
HIGH STANDARDS
YOU WILL SUCCEED

BOTELER.ORG.UK

	7 Monday	8 Tuesday	9 Wednesday	10 Thursday	11 Friday
08:00	08:25-08:55	08:25-08:55	08:25-08:55	08:25-08:55	
09:00	08:55-09:55 Health + Social: Year 10: 10C/HS	08:55-09:55 English: Year 10: 10En Gre	08:55-09:55 Mathematics: Year 10: 10Ma Gre	08:55-09:55 Science: Year 10: 10Sci Gre	08:55- 09:10- English: Year 10:
10:00	09:55-10:55 Science: Year 10: 10Sci Gre	09:55-10:55 English: Year 10: 10En Gre	09:55-10:55 English: Year 10: 10En Gre	09:55-10:55 English: Year 10: 10En Gre	10:10-11:10 Science: Year 10: 10Sci Gre
11:00	11:15-12:15 Geography: Year 10: 10A/Geo1	11:15-12:15 Mathematics: Year 10: 10Ma Gre	11:15-12:15 Physical Educn: Year 10: 10PE Ind	11:15-12:15 Computer Sci: Year 10: 10B/CS	11:25-12:25 Health + Social: Year 10: 10C/HS
12:00	12:15-13:15 Computer Sci: Year 10: 10B/CS	12:15-13:15 Computer Sci: Year 10: 10B/CS	12:15-13:15 Geography: Year 10: 10A/Geo1	12:15-13:15 Religious Educn: Year 10: 10RE Gre	12:25-13:25 Mathematics: Year 10: 10Ma Gre
13:00					
14:00	14:00-15:00 Mathematics: Year 10: 10Ma Gre	14:00-15:00 Religious Educn: Year 10: 10RE Gre	14:00-15:00 Religious Educn: Year 10: 10RE Gre	14:00-15:00 Health + Social: Year 10: 10C/HS	14:00-15:00 Geography: Year 10: 10A/Geo1
15:00					



**SIR THOMAS
BOTELER**

CHURCH OF ENGLAND HIGH SCHOOL
THROUGH GOD, WE CARE

HIGH EXPECTATIONS
HIGH ASPIRATIONS
HIGH STANDARDS
YOU WILL SUCCEED

BOTELER.ORG.UK

FOUNDATION

- Energy
- Cognitive functions
- Decision making
- Mental Clarity





**SIR THOMAS
BOTELER**

CHURCH OF ENGLAND HIGH SCHOOL
THROUGH GOD, WE CARE

HIGH EXPECTATIONS
HIGH ASPIRATIONS
HIGH STANDARDS
YOU WILL SUCCEED

BOTELER.ORG.UK

LOCATION





**SIR THOMAS
BOTELER**

CHURCH OF ENGLAND HIGH SCHOOL
THROUGH GOD, WE CARE

HIGH EXPECTATIONS
HIGH ASPIRATIONS
HIGH STANDARDS
YOU WILL SUCCEED

BOTELER.ORG.UK

**BE THE ARCHITECT OF YOUR
ENVIRONMENT, NOT THE VICTIM**



**SIR THOMAS
BOTELER**

CHURCH OF ENGLAND HIGH SCHOOL
THROUGH GOD, WE CARE

HIGH EXPECTATIONS
HIGH ASPIRATIONS
HIGH STANDARDS
YOU WILL SUCCEED

BOTELER.ORG.UK

AVOID PROCRASTINATION



**SIR THOMAS
BOTELER**

CHURCH OF ENGLAND HIGH SCHOOL
THROUGH GOD, WE CARE

HIGH EXPECTATIONS
HIGH ASPIRATIONS
HIGH STANDARDS
YOU WILL SUCCEED

BOTELER.ORG.UK

POMODORO EFFECT



**SIR THOMAS
BOTELER**
CHURCH OF ENGLAND HIGH SCHOOL
THROUGH GOD, WE CARE

HIGH EXPECTATIONS
HIGH ASPIRATIONS
HIGH STANDARDS
YOU WILL SUCCEED

BOTELER.ORG.UK

WHAT IS THE POMODORO TECHNIQUE?

A method for staying focused and mentally fresh

STEP 1



Pick a task

STEP 2



Set a 25-minute timer

STEP 3



Work on your task until the time is up

STEP 4



Take a 5 minute break

STEP 5



Every 4 pomodoros, take a longer 15-30 minute break



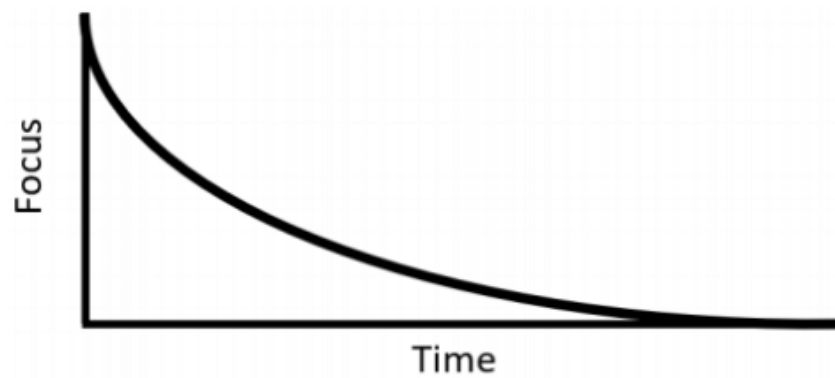
**SIR THOMAS
BOTELER**

CHURCH OF ENGLAND HIGH SCHOOL
THROUGH GOD, WE CARE

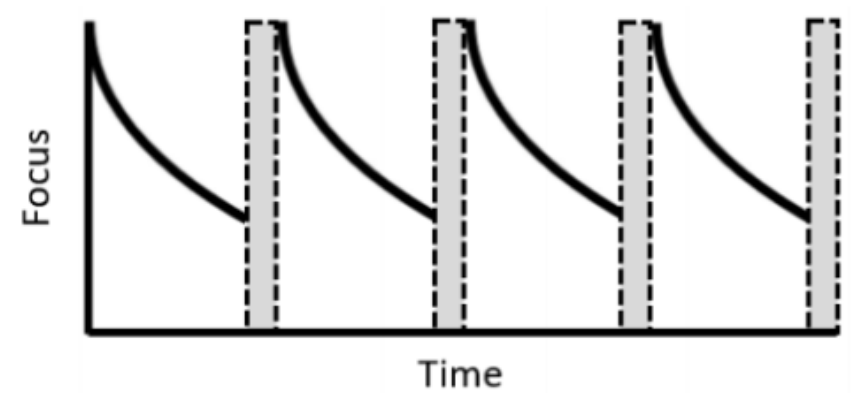
HIGH EXPECTATIONS
HIGH ASPIRATIONS
HIGH STANDARDS
YOU WILL SUCCEED

BOTELER.ORG.UK

Revising without a break:



Revising with small regular breaks:



03:00



**SIR THOMAS
BOTELER**
CHURCH OF ENGLAND HIGH SCHOOL
THROUGH GOD, WE CARE

HIGH EXPECTATIONS
HIGH ASPIRATIONS
HIGH STANDARDS
YOU WILL SUCCEED

BOTELER.ORG.UK

Parent Forum Feedback Survey - KS4 Exam Preparation and Study Skills





**SIR THOMAS
BOTELER**
CHURCH OF ENGLAND HIGH SCHOOL
THROUGH GOD, WE CARE

HIGH EXPECTATIONS
HIGH ASPIRATIONS
HIGH STANDARDS
YOU WILL SUCCEED

BOTELER.ORG.UK

PARENT FORUM: 2024 - 2025

- 10th October: Exam Preparation and Study Skills
- 28th November: Arbor and SAM Homework Support
- 6th February: Understanding the Curriculum
- 20th March: Technology and Digital Safety
- 22nd May: Well-being and Mental Health Support
- 10th June: Post 16 Pathways Year 10



**SIR THOMAS
BOTELER**

CHURCH OF ENGLAND HIGH SCHOOL
THROUGH GOD, WE CARE

HIGH EXPECTATIONS
HIGH ASPIRATIONS
HIGH STANDARDS
YOU WILL SUCCEED

BOTELER.ORG.UK



The Boy, the mole, the fox and the Horse



Charlie Mackery



**SIR THOMAS
BOTELER**

CHURCH OF ENGLAND HIGH SCHOOL
THROUGH GOD, WE CARE

HIGH EXPECTATIONS
HIGH ASPIRATIONS
HIGH STANDARDS
YOU WILL SUCCEED

BOTELER.ORG.UK



"I can't see a
way through,"
said the boy
"Can you see your next step?"

"Yes"
"Just take that," said
the horse



**SIR THOMAS
BOTELER**

CHURCH OF ENGLAND HIGH SCHOOL
THROUGH GOD, WE CARE

HIGH EXPECTATIONS
HIGH ASPIRATIONS
HIGH STANDARDS
YOU WILL SUCCEED

BOTELER.ORG.UK



Orsted
Good
Partner

TCAT
THE
CHALLENGE
ACADEMY
TRUST



**SIR THOMAS
BOTELER**

CHURCH OF ENGLAND HIGH SCHOOL
THROUGH GOD, WE CARE

HIGH EXPECTATIONS
HIGH ASPIRATIONS
HIGH STANDARDS
YOU WILL SUCCEED

BOTELER.ORG.UK



WE ARE PART OF



THE
CHALLENGE
ACADEMY
TRUST



**SIR THOMAS
BOTELER**

CHURCH OF ENGLAND HIGH SCHOOL
THROUGH GOD, WE CARE

HIGH EXPECTATIONS
HIGH ASPIRATIONS
HIGH STANDARDS
YOU WILL SUCCEED

BOTELER.ORG.UK

Ofsted
Good
Provider

WE ARE PART OF
TCAT

THE
CHALLENGE
ACADEMY
TRUST

KS4 EXAM PREPARATION AND STUDY SKILLS

THANK YOU

